

# Final Design

## Key

- Traffic Calming Measures
- Signalised Crossing
- Proposed walking route improvements
- Pocket Park, Green Space
- Proposed Shared Use Footpath
- Proposed cycling route improvements



# BY OURS COWLEY HILL LIVEABLE NEIGHBOURHOOD

PROJECT UPDATE - FEBRUARY 2024

By Ours Cowley Hill is a joint community project in partnership with Sustrans and Liverpool City Region Combined Authority. The project aims to help residents, businesses and schools re-imagine our local streets.

From 2022 and into 2023 a series of consultation workshops were held by Sustrans, alongside a survey asking the community about current issues and what they would like to see in the streets and spaces in their area, to encourage more people to walk, wheel and cycle.

St Helens Borough Council have since prioritised the list of infrastructure improvements requested by the local community against the allocated budget secured from the Active Travel Tranche 3 Fund and the Shared Prosperity Fund.

## WE LISTENED:



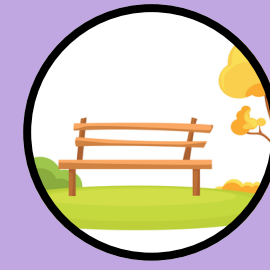
A signalised crossing on Duke Street, west of Hamer Street



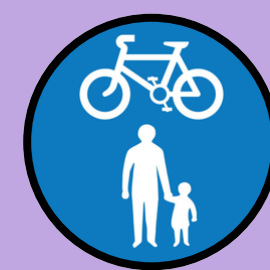
Pedestrian accessibility improvements across a West-East corridor from Bishop Road to North Road



Raised junction tables that act as traffic calming features at five locations



A 'Pocket Park' at Cooper Street/ Chapel Street including a new footway link



New shared use footway and cycleway across Bishop Road Playing Fields

## YOU ASKED FOR:

CONTROLLED CROSSINGS

FOOTWAY IMPROVEMENTS

JUNCTION IMPROVEMENTS

GREEN SPACE IMPROVEMENTS

NEW PATHS THROUGH THE PARK

TRAFFIC CALMING MEASURES

FOR MORE INFORMATION VISIT OUR WEBSITE :

<https://www.sthelens.gov.uk/article/7994/By-Ours-project>

METROMAYOR LIVERPOOL CITY REGION

Funded by UK Government

POWERED BY LEVELLING UP



By Ours



LIVERPOOL CITY REGION COMBINED AUTHORITY

ST HELENS BOROUGH COUNCIL