

The Budget, Your Council Tax and Local Services

Each year
St Helens Council
delivers over 700
local services to:

178,000



Residents

82,000



Households

Our services are funded in a number of ways, but mainly from:

Council
Tax

Fees &
Charges
e.g. leisure,
registrars

Business
Rates

Government
Grant

Over the
last 10 years
our general
Government
grant has
been cut by:

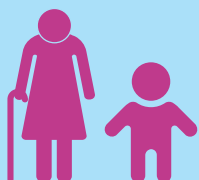
£90m
per year

That's a 71% reduction

This means
£507
less per year
for every man,
woman & child
in St Helens

At the same time the demand and cost of delivering our services is increasing.

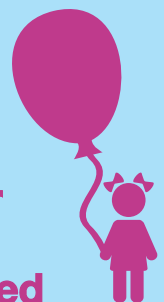
71%



of our net budget
is now spent on
adult social care
and children's
services

In the last
10 years

the cost of caring for
children looked after
has more than doubled



Some of the demand in adult and children's services in 2019:



3,748

people in need of long term adult social care



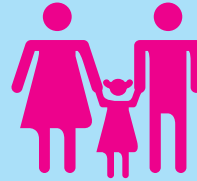
825,000

hours supporting over 65's to live at home



2,167

referrals to children's social care



529

children looked after



£192,000

avg cost of a children's out of borough placement*

*This is for safeguarding reasons

This is how much we will spend in 2020/21 on some of the services we provide:



£180m

Children's and Family Services



£72m

Adult Social Care & Health



£13m

Public Health



£6m

Waste Collection & Recycling



£5m

Highways & Street Lighting



£4m

Sports & Leisure



£2m

Planning & Development



£2m

Libraries & Arts



£1m

Parks & Open Spaces



£1m

Street Cleansing

Demand for these essential services is rising, so we have no choice but to raise council tax.

This will generate...

£3m



For over
85%
of households

This is less than an additional

£1 a week

Without the council tax rise, we'd have to find a further £3m in savings.

Also in 2020/21 we have budgeted to receive:

£57.7m



of business rates

This includes
an estimated

£2.1m



of new
growth

With the extra income from council
tax and business rates taken into
consideration, for 2020/21 we will
have a budget gap of:

£10m

So **HOW** will
we **FILL** the gap?

£5m

from the one off use
of reserves. This is
not a sustainable way
of delivering services

£5m

from income generation
& unavoidable cuts to
services

**We'll continue to
do all we can by:**



Attracting
new
businesses



Increasing
partnership
working



Doing
more
online



Transforming
& being
more efficient



Maximising the
benefits of being
in the Liverpool
City Region

Did you know?

Not all council tax collected pays for council services. It also supports the police, the fire service and the Combined Authority too.



ST HELENS
COUNCIL
£1,503.75*



POLICE
£211.97



FIRE
£80.40



COMBINED
AUTHORITY
£19.00



COUNCIL TAX
BAND D
£1,815.12*

*Excluding parish precepts

Did you also know?

Council tax in St Helens continues to be the lowest on Merseyside.

Help us keep council costs down



Manage your council tax online

Sign up for e-billing and help the council cut down on costly paperwork, visit: www.sthelens.gov.uk/counciltax



Contact the council and make payments online

Online transactions cost the council roughly 32pence compared to £7.40 to speak to us. Use the self-service section of our website for fast and easy access to council services, visit: www.sthelens.gov.uk/selfservice



Recycle more

Recycling helps protect our environment and reduces costs. Find out more on: www.sthelens.gov.uk/recycling

Join in the conversation

Follow [@sthelenscouncil](https://twitter.com/sthelenscouncil) on Twitter and search **St Helens Council** on Facebook and Instagram

Please contact us to request translation of Council information into Braille, audio tape or a foreign language.