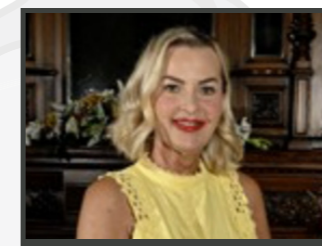




**Councillor George Woodward**  
Council Leader (Cabinet Chair)

Strategy  
Strategic Communications  
Liverpool City Region



**Councillor Sharon Roughley**  
(Deputy Leader - People's and Civic)

**Stronger Communities**  
Housing Strategy & Advice  
Homelessness  
Community Safety  
Regulatory Services  
Night-time economy  
Cemeteries & Crematorium



**Councillor Michael Gibson**  
(Deputy Leader - Place and Growth)

**Environment & Waste**  
Waste Collection & Recycling  
Street Cleansing  
Parks and Open Spaces  
Grounds Maintenance  
Traded Services including School  
Catering, Facility Management  
and Security



**Councillor David Kent**  
Finance & Governance

Finance  
Budget Strategy  
Revenues & Benefits  
Procurement, Commercialisation  
& Income Generation  
Legal Services  
Democratic Services  
Civic Events  
Audit & Risk  
Contact Centre



**Councillor Gary Edgerton**  
Business, Highways & Transport

Business Relationships, Growth  
& Support  
Economic Development  
Transport Strategy  
Highways and Infrastructure  
Parking  
Adult and Community Learning  
Employment and Post 16 Skills  
Young People's Employment,  
Education & Training



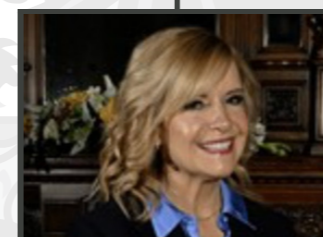
**Councillor James Long**  
People, Performance & IT

ICT & Digital  
Performance & Policy  
Transformation  
Information Governance  
FOI's, Compliance & Complaints  
People Management & Payroll  
Organisational Design  
& Development



**Councillor Jack Benyon**  
Regeneration, Property & Planning

Planning  
Local Plan  
Town Centre Regeneration  
Economic Regeneration  
Property & Estates  
Building Control  
Assets & Buildings  
Housing Development  
St Helens Town Deal  
Newton-le-Willows Pride in Place  
East of Town Centre and  
Fingerpost Pride in Place



**Councillor Eileen Fleming**  
Adult Social Care & Health

Adult Social Care  
Adult's Safeguarding  
Health & Social Care Integration  
Integrated Commissioning  
Cheshire & Merseyside Health  
& Care Partnership  
Public Health  
Health Protection  
Prevention  
One Neighbourhood



**Councillor Michael Chesworth**  
(Statutory Lead)

**Children & Young People**  
Children's Social Care  
Children's Safeguarding  
School attendance  
Youth Justice  
Nurseries & Schools  
Post 16 Special Educational Needs  
(SEN)  
School Improvement & Intervention



**Councillor Jennifer Gerrard**  
Leisure, Culture & Heritage

Culture, Arts & Heritage  
Libraries  
Leisure & Recreation Facilities  
Sports Development  
Voluntary, Faith & Community  
Development