



Adoption Statement Town and Country Planning (Local Planning) (England) Regulations 2012 St Helens Borough Council

- **Affordable Housing Supplementary Planning Document**
- **Houses in Multiple Occupation Supplementary Planning Document**
- **Local Economy and Social Value Supplementary Planning Document**
- **Locally Listed Heritage Assets Supplementary Planning Document**

In accordance with Regulations 11, 14 and 35 of the Town and Country Planning (Local Planning) (England) Regulations 2012, notice is hereby given that St Helens Borough Council formally adopted the following Supplementary Planning Documents (SPDs) at its Cabinet meeting on 21 January 2026 having taken into account the representations received during earlier consultation drafts.

Affordable Housing Supplementary Planning Document

The purpose of this SPD is to set out the council's expectations in relation to affordable housing provision on development sites, to ensure that prospective developers are aware of the requirements that need to be met when submitting a planning application for residential development. It provides guidance in relation to the interpretation and implementation of the policies in the Local Plan, in particular, Policy LPC02: Affordable Housing.

Houses in Multiple Occupation Supplementary Planning Document

The purpose of this SPD is to set out the council's approach to better manage the provision of new Houses in Multiple Occupation throughout St Helens. It provides guidance in relation to the interpretation and implementation of policies in the Local Plan, in particular, Policy LPC01: Housing Mix, along with Development Management policies such as Policy LPD01: Ensuring Quality Development and Policy LPD02: Design and Layout of New Housing.

Local Economy and Social Value Supplementary Planning Document

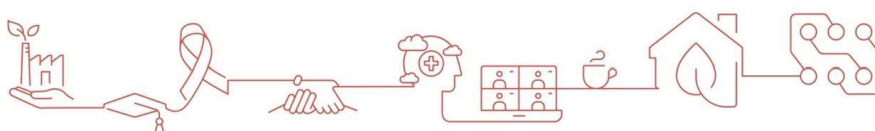
The purpose of this SPD is to set out, to developers and applicants, the council's approach to encouraging economic growth within the Borough alongside the council's aspirations to secure additional outcomes (known as social value) for local residents, communities and businesses e.g., through education, employment, training and other development opportunities such as housing. This involves increasing employment opportunities by helping local businesses to improve, grow and take on more staff, helping businesses to find suitable staff and suppliers, especially local ones, and improving the skills of local people to enable them to take advantage of the resulting employment opportunities.

Locally Listed Heritage Assets Supplementary Planning Document

The purpose of this SPD is to set out the criteria for identifying buildings and structures of special local architectural and historical interest, the process for adding these buildings/structures to a 'local heritage list' and to offer them a level of protection against undesirable alterations and/or irreplaceable loss.

The SPDs will be used to inform decisions on land use planning in St Helens and are 'material considerations' in the decision-making process, supporting the planning policies of the adopted Local Plan.

Copies of the adopted SPDs, the Adoption Statement and the Consultation Statement can be found on the Council website at <https://www.sthelens.gov.uk/article/3773/Consultations-and-latest-news>. Paper copies of the documents are also available for inspection at the following address during office hours: Main Reception, St Helens Town Hall, Victoria Square, St Helens, WA10 1HP.



Challenge

The proposals came into operation on 21 January 2026. Any person aggrieved by the SPDs may apply to the High Court for permission to apply for judicial review of the decision to adopt the SPDs. Such an application must be made promptly and in any event not later than three months after the date on which the SPD was adopted.

For further information on the above please contact the Planning Policy Team by:

Telephone: 01744 676190

Email: planningpolicy@sthelens.gov.uk

Post: Planning Policy, St Helens Borough Council, PO Box 512, St Helens, WA10 9JX

