

---

# **West End Road: Natural Flood Management (NFM) Sankey Valley “Slow the Flow” Project**

# Overview - Natural Flood Management Project



**ST HELENS**  
BOROUGH COUNCIL

## Scheme Focus

- To manage the flow of water
- Storage of about 3000m<sup>3</sup> (equivalent to 1.2 Olympic-size swimming pools)
- Reduce the risk to downstream receptors
- Intercept water overtopping from the river
- Intercept water flowing from higher and to the river
- Intercept water from drainage culverts from upper land reaches

## Funding

- Business Case Developed by the Council
- Scheme is funded by Environment Agency Grants:
  - Flood Defence Grant in Aid
  - Frequently Flooded Communities Grant

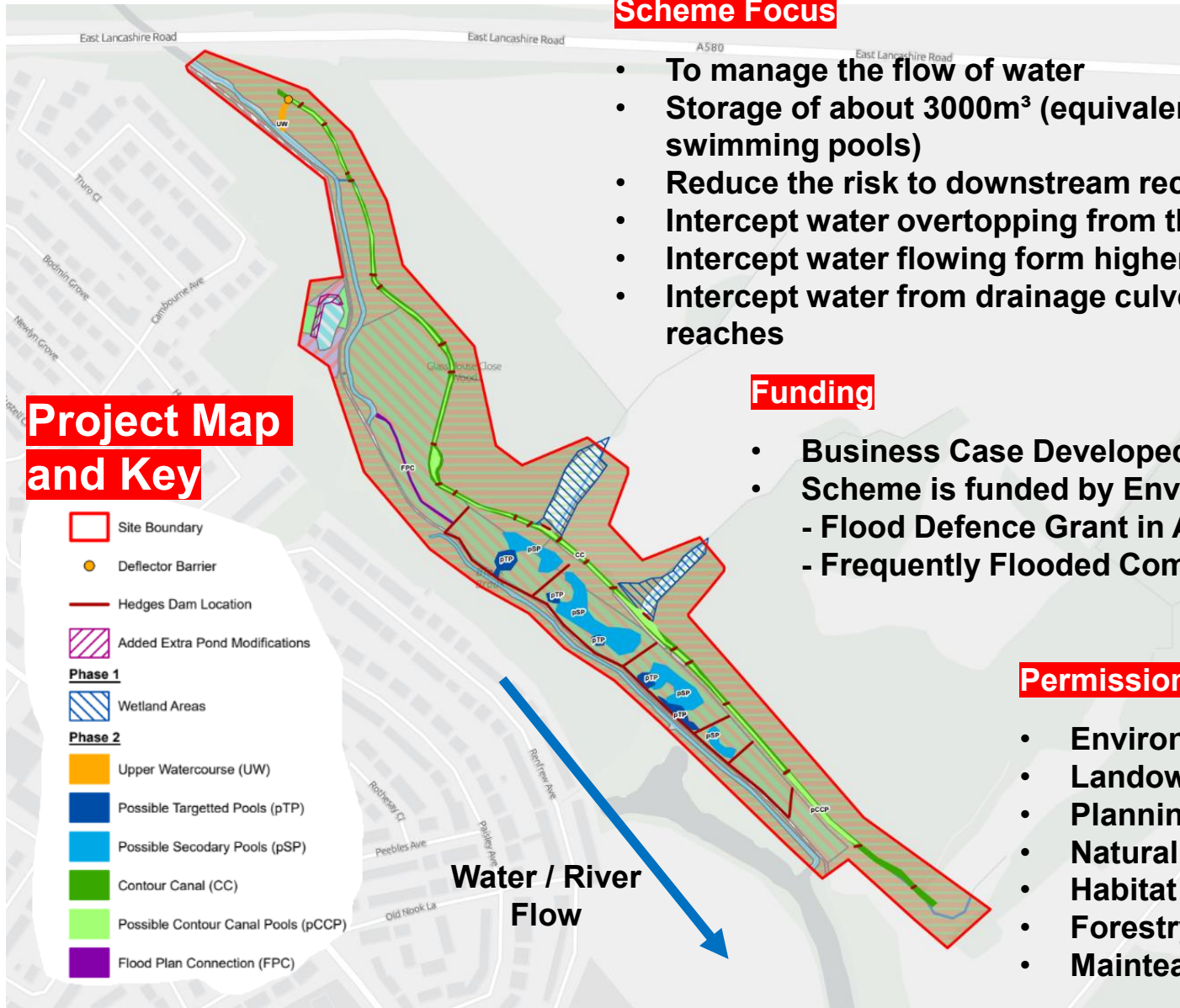
## Permissions

- Environment Agency
- Landowner
- Planning Requirements
- Natural England Consent
- Habitat and Ecological Surveys
- Forestry Commission
- Maintenance Implications

## Project Map and Key

- Site Boundary
- Deflector Barrier
- Hedges Dam Location
- Added Extra Pond Modifications
- Phase 1**
  - Wetland Areas
- Phase 2**
  - Upper Watercourse (UW)
  - Possible Targeted Pools (pTP)
  - Possible Secondary Pools (pSP)
  - Contour Canal (CC)
  - Possible Contour Canal Pools (pCCP)
  - Flood Plan Connection (FPC)

**Water / River Flow**



# Valley Floor Section - (NFM) Project

## Concept Image

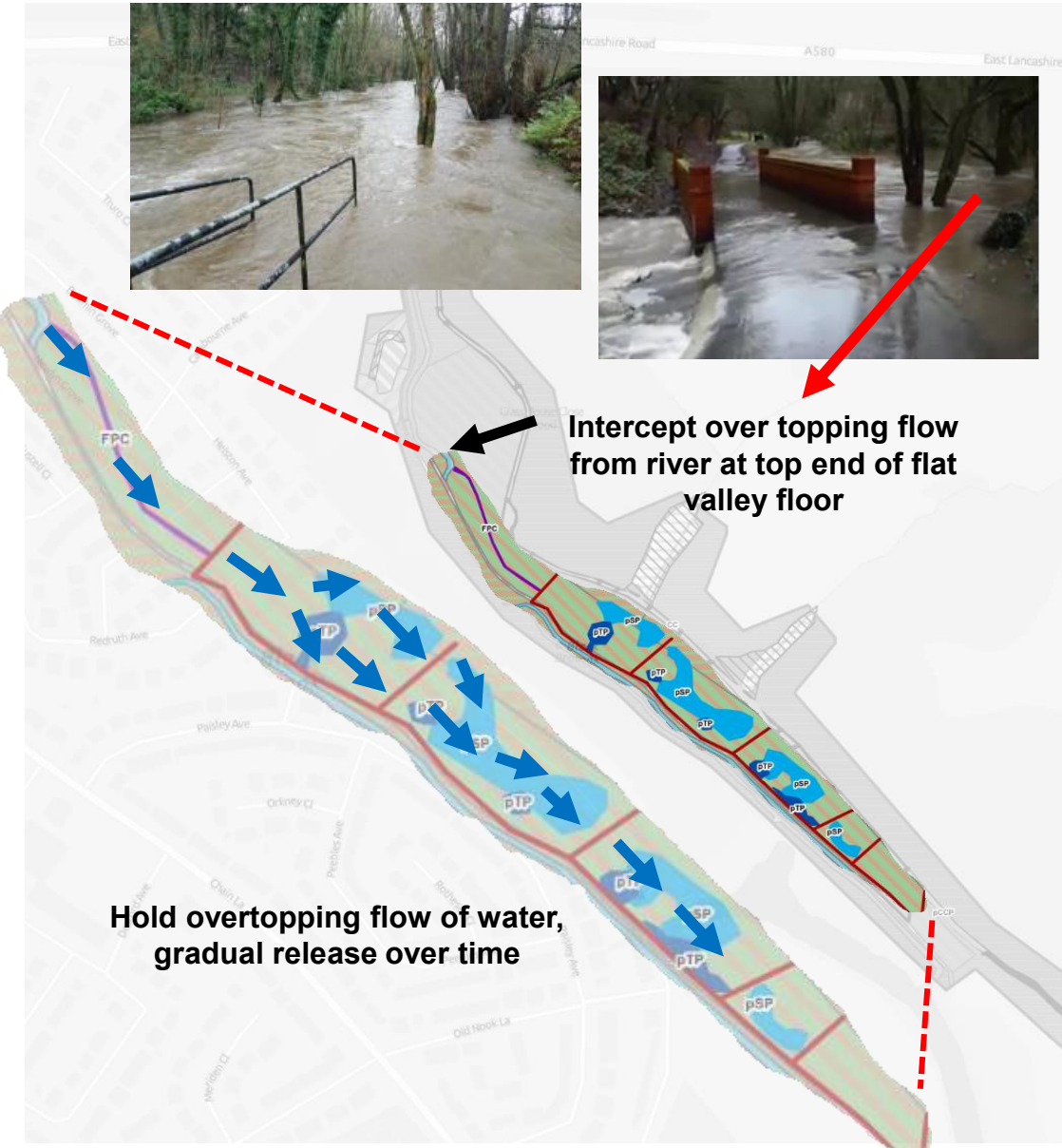


- Capturing water over topping from the river in the valley
- Utilising a small bund and then a willow hedge row along the footpath to hold water
- Creating willow hedge rows across the valley to contain water in, but still allow movement of water in between to drain away
- Creating small ponds within the valley floor which holds water for longer periods



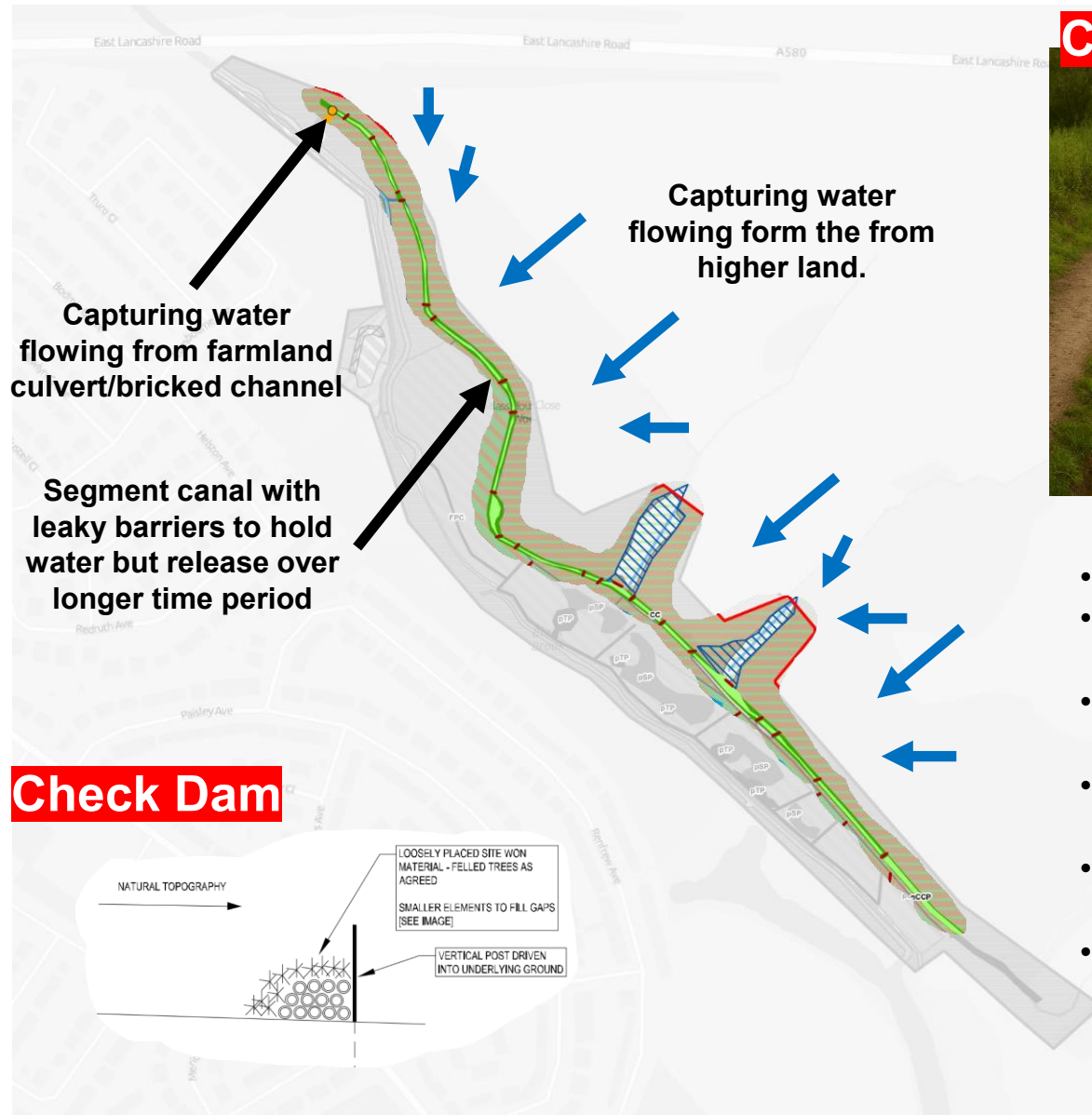
Intercept over topping flow from river at top end of flat valley floor

Hold overtopping flow of water, gradual release over time





# Contour Canal Section - (NFM) Project



## Concept Image



- Reduce the apparent rush impact
- Capturing water flowing from the from the higher valley areas
- Creating willow hedge rows across the contour canal to contain water
- Reduce the rate and time before it gets to the watercourse
- Intercept flow from upstream farmland culvert
- Re use the contour canal to hold water

## Contractor

- Contractor is George Cox and Sons Ltd
- <https://gcox.co.uk/>
- Via Star Procurement Framework



## Works Programme

- Works are subject to Weather Conditions, Ecological Constraints and Licencing
- January 2026 – Site Set Up / Mobilisation
- February 2026 – Development of Sankey Valley section of the project
- March 2026 – Development of the Contour Canal section of the project
- Completion – Spring/Summer 2026
- Controlled Public Access (access to public pathways will be maintain, where possible)