



# EYQI Updates

EY Quality and Inclusion Team

Atlas House

PO Box 512

ST HELENS

WA10 9JX

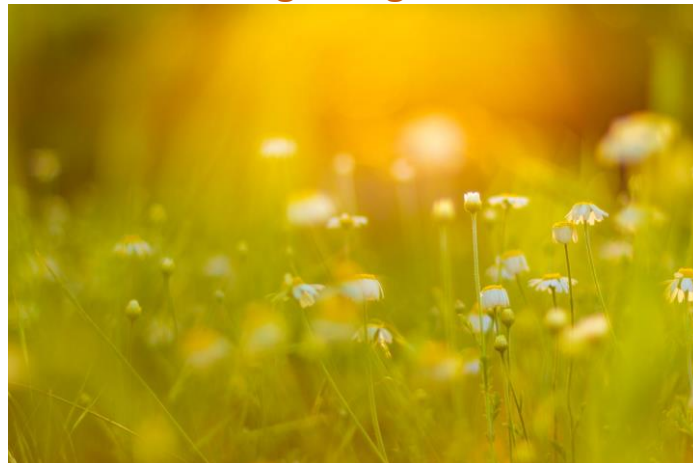
Lidia Wolos 01744 67 1051/mobile 07784360762

Chris Dixon 01744 67 3378/mobile 0754 63 01311

Gemma Oakes 01744 67 5397/07706991364

<https://www.sthelens.gov.uk/EarlyYearsHub>

**Week beginning 14.7.2025**



As we approach the summer break, the Early Years Quality Improvement (EYQI) team would like to extend our heartfelt best wishes to all of you. We hope the summer provides an opportunity for rest, rejuvenation, and quality time with your loved ones. May your summer be filled with enriching experiences, joyful moments, and the chance to create lasting memories. We look forward to welcoming you back, refreshed and ready for another year of growth and learning. For those who remain open, please know that we will be working over the summer to continue supporting you.

Warm regards, The EYQI Team



[EYFS statutory framework for childminders \(effective until 31 August 2025\)](#)

PDF, 426 KB, 44 pages



[EYFS statutory framework for group and school-based providers \(effective until 31 August 2025\)](#)

PDF, 494 KB, 51 pages



[EYFS statutory framework for childminders \(effective from 1 September 2025\)](#)

PDF, 622 KB, 50 pages



[EYFS framework for group and school-based providers \(effective from 1 September 2025\)](#)

PDF, 683 KB, 55 pages

## EYFS Changes Safeguarding reforms September 2025.

Over the past few weeks, we have conducted five briefing sessions to discuss the anticipated changes to the EYFS effective from September 2025. If you were unable to attend, please refer to the attached presentation. Should you have any questions, feel free to contact us at [eyhub@sthelens.gov.uk](mailto:eyhub@sthelens.gov.uk).

On Monday, 14th July 2025, the new EYFS 2025 was released, effective from 1st September 2025. There are more changes than

we initially expected, so we strongly recommend reviewing the new EYFS 2025 thoroughly to prepare for September.

### Early years foundation stage (EYFS) statutory framework - GOV.UK

In September 2025, we will offer additional training sessions covering all the changes in the EYFS. Keep an eye out for our new Autumn term training booklet, coming soon!

### Early Years Foundation Stage Nutrition Guidance

The Early Years Foundation Stage (EYFS) nutrition guidance, effective from September 2025, aims to ensure that all meals, snacks, and drinks provided to children are healthy, balanced, and nutritious. This guidance is now a mandatory part of the EYFS safeguarding and welfare requirements. Early years providers must follow this guidance unless there is a valid reason not to

The guidance includes recommendations on portion sizes, food groups, and menu planning to support the health and well-being of children aged 0-5 years

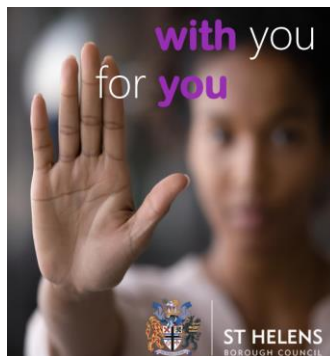
It also emphasises the importance of creating a safe and positive eating environment.

### Early Years Foundation Stage nutrition guidance

### **Early Years Foundation Stage nutrition guidance**

**Guidance for group and school-based  
providers and childminders in England**

**May 2025**



## St Helens Domestic Abuse service directory 2025

The scale of domestic abuse across the St Helens borough cannot be underestimated. There were 3,745 reports of domestic abuse in 2023 /24. This is a reduction from the number of incidents in the previous year 2022 /23 of 4,706 but it remains at a very high level. For this reason, Domestic Abuse remains one of the priorities for St Helens.

### [st helens domestic abuse service directory 1.pdf](#)

## Flu

### Vaccine survey for children aged 2-3 years

The following questionnaire is anonymous. All answers will be used by St Helens Public Health team to inform activity that will improve accessibility of the flu vaccine for children that attend private nurseries and child minders.

Please only fill out this form if you have a child that will be 2 or 3 years old during October 2025 and March 2026 AND attends a private nursery (not attached to a primary school) or a child minder.

<https://www.smartsurvey.co.uk/s/XJ6K5H/>

### **PVI MS Teams Forum for private nurseries and childminders:**

<https://teams.microsoft.com/l/channel/19%3a296c4d2f7039446a9e0aa281bd40e55a%40thread.tacv2/General?groupId=4f2a06e5-0991-4575-be27-b6cc16d97f34&tenantId=ef41c22b-1a60-4d86-a8bd-5d3a95f8abab>

### **Schools MS Teams Forum**

<https://teams.microsoft.com/l/channel/19%3a2589ee5f1bd043fdbb67bec3cd7d3b1c%40thread.tacv2/General?groupId=9e33e316-91dc-4469-94d4-36a4da88746a&tenantId=ef41c22b-1a60-4d86-a8bd-5d3a95f8abab>