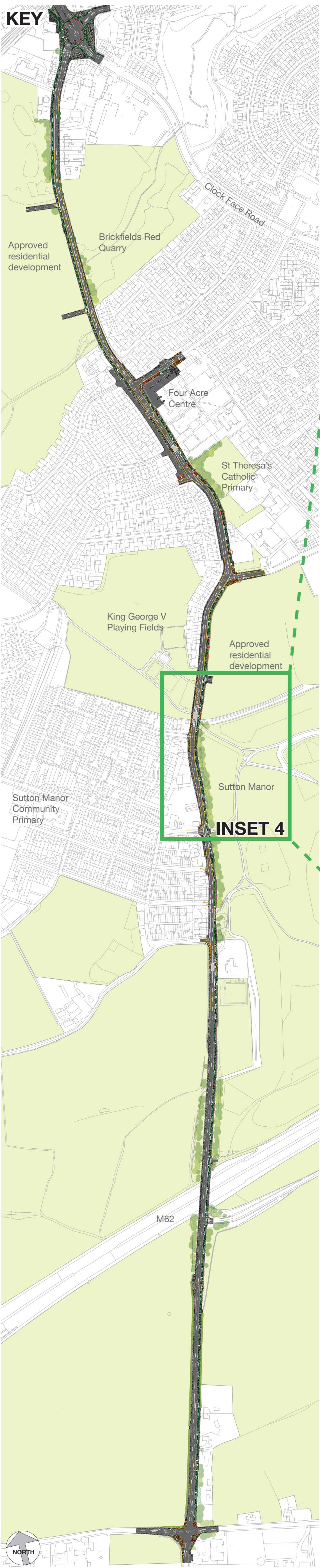


# St Helens Active Travel Route

## Design Consultation Board 4

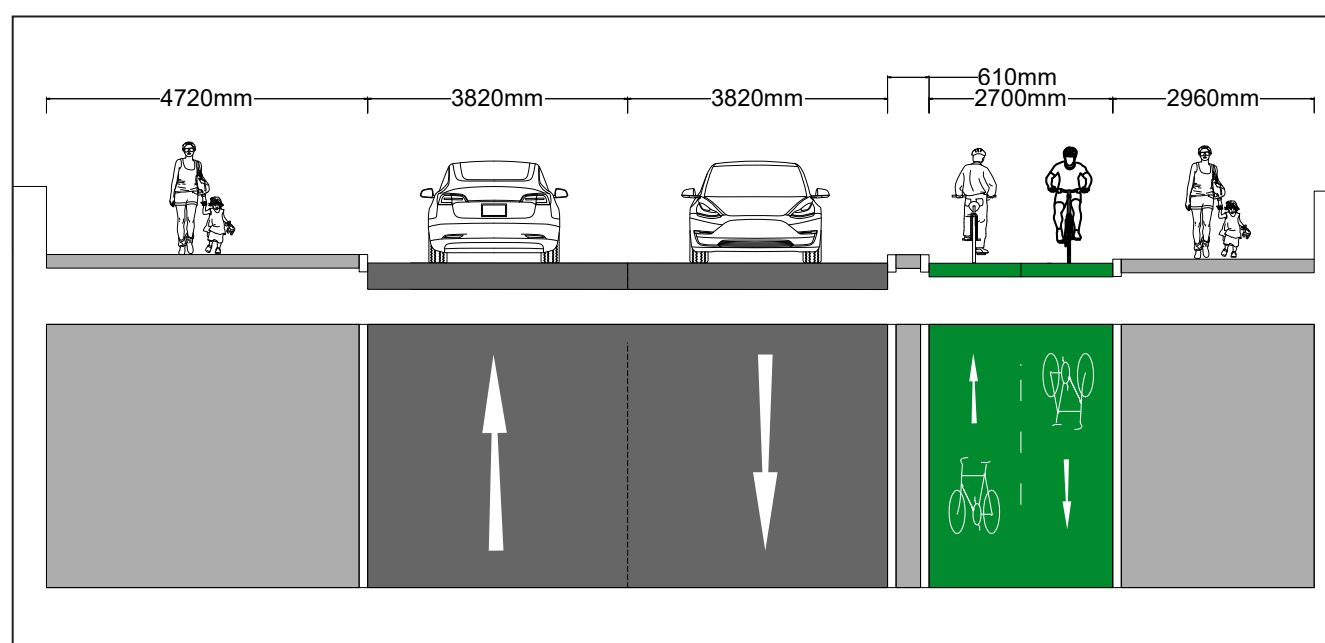


### INSET 4 Forest Road to Chandlers Way



#### Legend

- Cycle Track
- Footway / Hard Verge
- Shared Surface [Cyclist and Pedestrian Mixed]
- Grass Verge / Green Space
- Proposed Road/ Cycle track Markings
- Blister Paving Buff to assist visually impaired people
- Blister Paving Red to assist visually impaired people
- Corduroy Paving
- Tram and Ladder Paving
- Raised Table
- Retained Trees
- Removed Trees, subject to consultation and tree surveys
- View



Section D-D

#### Inset 4: Forest Road to Chandlers Way

1. New two-way cycle track of minimum width 2.25m (generally 2.7m) introduced along the eastern side of Jubits Lane.
2. Minimum carriageway width of 6.4m (generally over 7m) along this section of Jubits Lane.
3. All existing private vehicle access crossings to be retained.
4. New brick boundary wall to Sutton Manor Woodland constructed from a point opposite Milton Street to the former Sutton Manor Colliery gates, which remain in their current location.
5. New signalised crossing to the south of Forest Road.
6. New signalised crossing for people walking and cycling on a raised table to the north of Chandlers Way, next to King George V playing fields.
7. New bus access kerbs provided at bus stops.
8. Improved street lighting provided along the route.

